



Julie Hatcher, Dorset Wildlife Trust



PANACHE

Protected Area Network Across
the Channel Ecosystem

NEWSLETTER 02/2014

Towards a better protection of the Channel marine environment
through the networking of Marine Protected Areas and actors.

Vers une meilleure protection de l'environnement marin de la Manche
par la mise en réseau des aires marines protégées et des acteurs.

EDITORIAL

Over a year has passed already since the various PANACHE partners met in Le Havre to launch the initiatives. I had only set foot in the Agence des Aires Marines Protégées a week earlier and I could already see the wealth of the project's partners and themes. We were more and more pleased to get together at each meeting and the team bonded in just a few months. PANACHE has given rise to a genuinely interactive group that is already busy discussing activities that lie ahead – through to 2015 – even though we still have over a year's schedule of actions planned.

After getting into stride in 2013, the project is now running at cruising speed and beginning to deliver results. 2014 will be the year of achievement, as we learn from the first experiences of the past year and innovate to improve them. Soon, the twelve partners – plus the "guest" partners who have joined over time – will meet again, in Kent, when springtime comes.

The final conference of the MAIA project was described not as a closing event, but as an invitation to jump on the bandwagon. PANACHE is now following in the tracks of its Atlantic peer, heading for better protection of the Channel environment and inviting everyone to join in.

Gérald MANNAERTS, PANACHE coordinator



**PANACHE now has its own
website!**

Browse through the different sections to discover the European project. Query the databases, browse the web GIS, visit information pages and download the documents and maps produced. Above all, come back on a regular basis: this website is an ever-changing portal, updated as the work of the twelve French and British partners progresses!
PANACHE seeks to provide a common, coherent and efficient answer to cross-border challenges, and it now has a virtual showcase.

www.panache.eu.com

FOCUS ON 4 PANACHE PARTNERS

> HAMPSHIRE & ISLE OF WIGHT WILDLIFE TRUST

Hampshire and Isle of Wight Wildlife Trust is the leading nature conservation charity working exclusively across the two counties since 1961.

«Our vision is for the creation of living landscapes and living seas, rich in wildlife and valued by everyone. We have been active in marine conservation since 2000 and have developed a successful and highly regarded portfolio of marine projects and activities, including biodiversity and habitat survey work, developing marine policy and advocacy, working with industry and statutory authorities and inspiring people to appreciate their marine environment.»

Hampshire & Isle of Wight
Wildlife Trust

Protecting wildlife. Inspiring people.



«Our primary involvement in the Panache project is through its MPA awareness and citizen science objective. With partners we aim to **develop and increase general awareness of MPAs and build a sense of common ownership** through engagement in joint citizen science programs. We will develop methods for surveying both intertidal and subtidal habitats that can be used by the local community, including divers, to actively engage in their local MPAs and develop best practice to mobilize groups and individuals to a common goal.»



Amy Marsden/HIWWT

The seas and coasts of Hampshire and the Isle of Wight support a wide variety of protected areas. «We have organised Citizen Science surveys locations within Special Areas of Conservation (SACs), Special Protection Areas (SPAs), Sites of Special Scientific Interest (SSSIs) and recommended Marine Conservation Zones (rMCZs). Our sites are some of the most picturesque in the area and include locations that support high biodiversity and threatened/vulnerable species and habitats.

For example, sites such as Bembridge and Thorness Bay on the Isle of Wight host several important habitats such as seagrass, maerl, mud, and clay exposures and species such as stalked jellyfish, native oysters and black bream and are fantastic areas for both intertidal and subtidal citizen science surveys.

In Hampshire, sites such as Calshot, Hamble and Keyhaven support seagrass beds, native oysters and provide opportunities to increase awareness of non-native species which are common along our busy stretch of coast.»



Polly Whyte



©Justin A. Evans/www.justinevans.co.uk



©Justin A. Evans/www.justinevans.co.uk



©Justin A. Evans/www.justinevans.co.uk

> AGENCE DES AIRES MARINES PROTÉGÉES



France's Agence des Aires Marines Protégées (Marine Protected Area agency) is a public body established by law of 14 April 2006 and placed under the governance of the French Ministry of Ecology, Sustainable Development and Energy.

Its main missions include: supporting public policy for marine protected area establishment and management in the entire French maritime domain; leading the marine protected area network; providing marine nature parks with technical and financial support; and strengthening France's potential in international talks on the sea.

PANACHE is led by the Agence des Aires Marines Protégées. Charged with coordinating the European project, the Agency is also responsible for communication and for developing the public GIS database containing all useful information available about the Channel MPA network. The Agency is further leading on Work Package 3 of the PANACHE project aiming to strengthen coherence and foster interaction for improved marine protected area management.



A Marine Protected Area in Focus

The **Parc naturel marin des estuaires picards et Mer d'Opale** was established by decree on 11 December 2012. It is located off the shores of French counties Seine Maritime, Somme and Pas-de-Calais and stretches out to the marine traffic separation scheme. The park spans a marine area of 2,300 km² and borders 118 km of shoreline, thus covering a vast marine expanse! Due to its location, the Marine Nature Park is a major biological and economic crossroads. Here, human activities and the marine environment have long-standing cultural ties.

A marine nature park is an integrated management tool based on how the environment functions on every scale, from the most global to the most local. The ambition is to meet three fundamental goals: protect ecosystems, develop knowledge of the marine environment, and sustainably develop sea-related activities. The Estuaires picards et Mer d'Opale Marine Nature Park is part of the French Agence des Aires Marines Protégées.



> CORNWALL WILDLIFE TRUST

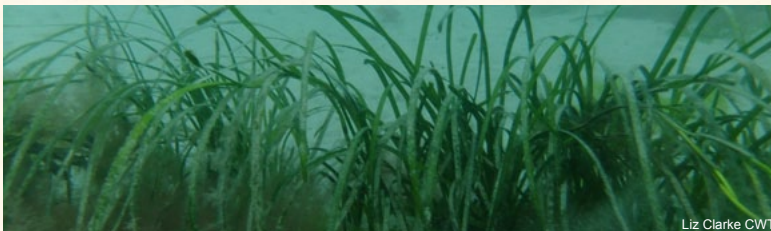


Cornwall

Based in the far South West of England, Cornwall Wildlife Trust are a conservation charity established in 1962 to safeguard Cornwall's wildlife and wild places.

«Our work as a Partner in the PANACHE project focuses on sharing our **extensive experience** and participating in a range of relevant activities including:

- Sharing **best practice** for monitoring dolphins and porpoises and developing management plans for these animals.
- Sharing best practice in raising public awareness of marine protected areas, achieved through engaging public events, and by participating in larger events such as fish festivals and regattas.
- Mobilizing citizen scientists through **Seasearch diving surveys and Shoresearch intertidal surveys**, focussing on Panache Core species, and non native species.
- Analysing effectiveness of public engagement and citizen science initiatives in changing people's perceptions of Marine Protected Areas.»



Liz Clarke CWT



Keith Hiscock

The UK government announced in December 2013 the creation of 27 new Marine Conservation Zones!

One example of a **newly formed MCZ is Whitsand and Looe bay**: «Through the PANACHE project we have carried out diving surveys and recorded important data that will help to guide the management of this site. We have also worked closely with the local community to raise the public profile of the Marine environment in this area by the creation of Looe Marine Conservation group who have led numerous public events, including a Bioblitz, Rockpool safaris and our Crazy about Crabbing event.»



Matt Slater / Cornwall Wildlife Trust



Liz Miller / Cornwall Wildlife Trust



Claire Lewis / Cornwall Wildlife Trust

> RSPB

The Royal Society for the Protection of Birds (RSPB) speaks out for birds and wildlife, tackling the problems that threaten the environment.

It is the largest wildlife conservation organisation in Europe with over one million members. Wildlife and the environment face many threats. The RSPB work is focussed on the species and habitats that are in the greatest danger. It is driven by the passionate belief that:

- birds and wildlife enrich people's lives,
- the health of bird populations is indicative of the health of the planet, on which the future of the human race depends,
- we all have a responsibility to protect wildlife.



The RSPB has been involved with the **monitoring of seabirds near MPAs** in south west England through using a small army of volunteers. This has involved regular sea watching in winter months and close to nesting colonies during the spring breeding season.

Two little tern colonies at Chesil Beach in Dorset and Langstone Harbour in Hampshire have been the focus of habitat works and people engagement activities. The results of this part of the Panache project have been shared to help the fortunes of vulnerable nesting birds. We are investigating the best ways to ensure good chick productivity from these sites by creating ideal nesting conditions and reducing human disturbance. Youth groups in Havant, helped create shelters for little tern chicks at Langstone Harbour. These helped protect the young birds from marauding gulls and crows who also had young families to feed.



Chris Gomersall (rspb-images.com)



RSPB



RSPB



RSPB

... discover 8 more PANACHE partners in the next newsletters!



THE PROJECT'S NEWS

The third PANACHE meeting was held in NAUSICAA, Boulogne sur Mer, from the 26th to the 28th of November. It gathered some 60 French and British participants. Several workshops were organised in accordance with the five project's workpackages. It provided a useful stage point for the partners and helped share and pool the tools that were already developed.



Line Henry / Agence des aires marines protégées



Line Henry / Agence des aires marines protégées



Line HENRY / Agence des aires marines protégées



Line Henry / Agence des aires marines protégées

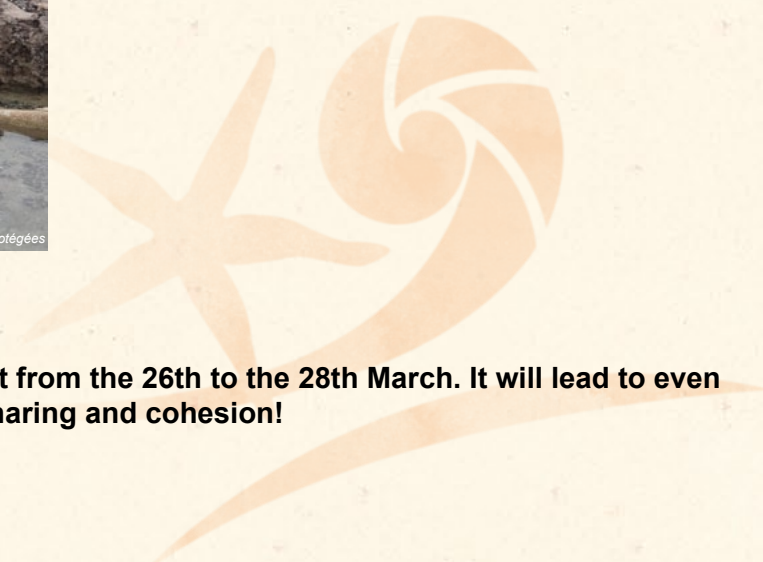


Line HENRY / Agence des aires marines protégées



Line HENRY / Agence des aires marines protégées

The next PANACHE meeting will be held in Kent from the 26th to the 28th March. It will lead to even more results, sharing and cohesion!



CITIZEN SCIENCES CALENDAR OF EVENTS

«Citizen sciences are information-gathering programmes involving the public in a scientific initiative. Citizen science applies in the field of biodiversity to achieve three objectives:

- Collect data about nature and biodiversity to study its state of health (long-term monitoring);
- Produce tools to raise awareness and educate the public about nature and biodiversity;
- Form and mobilise a community around nature conservation issues.”

(source)

Hampshire & Isle of Wight Wildlife Trust - Intertidal courses and surveys:

- Saturday 29th March – Lepe, Hampshire – training course and survey.
- Sunday 30th March – Calshot, Hampshire – survey.
- Thursday 17th April – Hillhead, Hampshire – survey.
- Wednesday 30th April – Ryde, Isle of Wight – survey.
- Sunday 11th May – Lepe, Hampshire – training course and survey.
- Thursday 15th May – St. Helen's, Isle of Wight – survey.
- Thursday 12th June – Lepe, Hampshire – survey.
- Saturday 14th June – Freshwater, Isle of Wight – survey.
- Saturday 12th July – Colwell Bay, Isle of Wight – survey.
- Sunday 13th July – Royal Victoria (Netley), Hampshire – survey.
- Saturday 9th August – Compton, Isle of Wight – survey.
- Thursday 14th August – Thorness Bay, Isle of Wight – survey.
- Tuesday 9th September – Keyhaven (Pennington Marshes), Hampshire – survey.

Hampshire & Isle of Wight Wildlife Trust Subtidal (diving) courses and surveys:

- Saturday 12th April – Seasearch Observer training course.
- Sunday 13th April – survey dives.
- Sunday 4th May – survey dives.
- Friday 23rd May – survey dives.
- Saturday 21st June – Seasearch Observer course.
- Sunday 22nd June – survey dives.
- Saturday 19th July – survey dives.
- Saturday 16th August – survey dives.
- Friday 3rd October – survey dives.

> Contact details for further information for all of the above – Abbi Scott – Abbi.Scott@hiwwt.org.uk.

RSPB

Summer 2014: Come and see the sea bird colony at the Oyster Beds on Hayling Island. Specific dates to be announced, but find out more on the website ([click here](#)).





PANACHE

Protected Area Network Across
the Channel Ecosystem

PANACHE is a Franco-British project funded by European programme INTERREG IV. The project aims for better protection of the Channel marine environment by establishing a network among existing marine protected areas.

There are five main project goals:

- Assess ecological coherence across the marine protected area network;
- Pool and share experience in monitoring these areas;
- Strengthen coherence and foster interaction for improved marine protected area management;
- Heighten awareness of marine protected areas: create a sense of ownership and shared expectations through citizen science programmes;
- Establish a public GIS database.

France and Great Britain are facing similar challenges to protect the marine biodiversity in their shared marine territory: PANACHE aims at providing a common, coherent and efficient reaction.

PANACHE est un projet franco-britannique, visant à une meilleure protection de l'environnement marin de la Manche par la mise en réseau des aires marines protégées existantes.

Les cinq objectifs du projet :

- Étudier la cohérence écologique du réseau des aires marines protégées;
- Mutualiser les acquis en matière de suivi de ces espaces, partager les expériences positives;
- Consolider la cohérence et encourager la concertation pour une meilleure gestion des aires marines protégées;
- Accroître la sensibilisation générale aux aires marines protégées : instaurer un sentiment d'appartenance et des attentes communes en développant des programmes de sciences participatives;
- Instaurer une base de données SIG publique.

France et Royaume-Uni sont confrontés à des défis analogues pour protéger la biodiversité marine de l'espace marin qu'ils partagent : PANACHE vise à apporter une réponse commune, cohérente et efficace.

- www.panache.eu.com -

Financé par



PANACHE Project partners / Partenaires du projet PANACHE

