



PANACHE

Protected Area Network Across
the Channel Ecosystem

NEWSLETTER 02/2015

Towards a better protection of the Channel marine environment
through the networking of Marine Protected Areas and actors.

Vers une meilleure protection de l'environnement marin de la Manche
par la mise en réseau des aires marines protégées et des acteurs.

EDITORIAL

The PANACHE project is drawing to an end, and as we prepare for the closing conference, it is interesting to review the programme's main achievements.

Work done to assess the network of marine protected areas (MPA) in the English Channel has confirmed that it is developing strongly, but has also brought to light the gaps in the network, particularly in offshore waters. Knowledge gained through this part of the project is important for the OSPAR Commission and the MSFD. In fact, we have no doubt that the MSFD will benefit greatly from all of the work done as part of PANACHE, particularly on the scale of the marine sub-region, like the marine birds monitoring. It is also very satisfying to see that PANACHE will leave methodological contributions like the toolkit for managers, as well as some very concrete contributions like the technology tests (towed camera, multibeam echosounder, etc.) or the techniques for protecting vulnerable birds nesting on beaches. The diversity of approaches is also found in the disciplines mobilised, since alongside conventional naturalistic surveys, there are «soft science» approaches, through perception surveys. Lastly, PANACHE has truly developed capitalisation in databases, through the birds and MPA databases.

PANACHE is the beginning of a cross-Channel partnership for marine protected area management. The French MPA Agency (Agence des aires marines protégées) naturally sees this partnership as a great advantage and truly hopes we will be able to take it further in future; there are numerous opportunities to share our monitoring and management methods, and not only has PANACHE proved that, it spurs us on to continue, for the benefit of European marine biodiversity protection policies.

François GAUTHIEZ
Director of Support to Public Policies Department
of the French *Agence des aires marines protégées*



SAVE THE DATE

The English Channel: one ecosystem, two projects
Valuing and protecting our shared sea



PANACHE

Protected Area Network Across
the Channel Ecosystem



Following three years of studies, the PANACHE and VALMER projects are reaching their conclusion and it is time to present the results achieved in terms of sustainable governance of Channel marine ecosystems. The final conference of these two Interreg IV A projects will be held on **17 and 18 March in Torquay** in the UK. The two-day conference will be an opportunity to present the key messages for adopting new approaches to sustainable management of the English Channel and to discuss the current challenges.

Several topics will be addressed during plenary meetings, workshops and through the open access digital multimedia exhibition. These diverse topics will encompass the ecological coherence of the MPA network, ecosystem services assessment, data management and stakeholder engagement and experience-sharing. The event will also be a forum for discussions with decision-makers, scientists and managers as well as other French and British stakeholders.

The two projects, PANACHE and VALMER, were selected as part of the INTERREG IV A France (Channel) – England European cross-border cooperation programme, co-funded by the ERDF.

The VALMER project aims to characterize and assess the numerous benefits of marine ecosystems for human well-being. It also studies ecosystem services and their uses in marine environment planning and management.



THE PROJECT'S NEWS

Within the framework of work package 2, a database that is interoperable with the North-East Atlantic MPA database (www.panache.eu.com/mpa_database_en) was developed to meet the needs of the marine birds observatory.



Benoît Dumeau
Agence des aires marines protégées

In the field of bird surveys, each NGO or marine protected area manager currently have their own database and there is no reflection on a more global scale. Also, the database fields vary greatly and there is no real standardisation of data.



Sylvain Dromzée
Agence des aires marines protégées

With this database it will be possible to manage the annual survey data of the main bird species present on the Channel coastline and thus assess the role that marine protected areas play in their conservation.

It comprises a PostgreSQL base populated by the various associations and organisations responsible for bird monitoring in the Channel, a map collection and dynamic mapping based on the technology developed by Ifremer via Sextant: sextant.ifremer.fr

>> Find it now on the website www.oiseaux-manche.org !



Sébastien Brégeon
Agence des aires marines protégées

The partners in charge of WP4 «Raising public awareness of marine protected areas: creating a sense of ownership and shared expectations through citizen science programmes» [review their activities in 2014:](#)

2014 has been a fantastic year for the public awareness work of the PANACHE Project. On both sides of the channel the PANACHE partners have been running exciting and engaging public events and activities to highlight the value of our network of Marine Protected Areas.

Along the south coast of Britain Wildlife Trusts have been running interactive shore days, often combined with the popular and user-friendly Shoresearch citizen science surveys. We have been blessed with extremely low tides and fabulous weather for most of these events and have chosen locations within existing Marine Protected Areas and recommended Marine Conservation Zones. These events have been extremely popular and have been successful in building local support and appreciation for the need for MPA's. On the French side our partners Nausicaá and Port de Dunkerque have also run many public events, taking in beach cleans, shark and ray egg case hunts and rockpooling, and Nausicaá have also held interactive Youth Forums, video competitions and engaging information days for stakeholders within Marine Protected areas.

The PANACHE Work Programme 4.1 « Raising public awareness of Marine Protected areas” has achieved a huge amount in its 2 years. In total the partners have carried out:

- 102 public awareness raising events
- 12,633 people engaged.

A huge amount of volunteer time was provided to the project and we now have networks of dedicated and trained volunteers across the PANACHE area who will continue this work.

A detailed report is being produced that will explain how the PANACHE partners identified key audiences for their awareness raising work and shares best practice in delivering engagement. The report explains the different approaches available for successful marine engagement work and will provide tips for similar projects in the future.

Cornwall Wildlife Trust, Dorset Wildlife Trust, Port de Dunkerque, Hampshire and Isle of Wight Wildlife Trust, Kent Wildlife Trust, Nausicaá.



© Justin A. Evans / www.justinevans.co.uk

Within the framework of WP4 «Raising public awareness of marine protected areas: creating a sense of ownership and shared expectations through citizen science programmes», Nausicaa organised a **Meeting on Marine Protected Areas**, on 27-28 November 2014.



The aim was to improve stakeholder awareness of the goals of a French marine nature park (Parc Naturel Marin), to heighten overall awareness of Marine Protected Areas, to create a sense of belonging and shared expectations, and to develop the messages to be conveyed to the public.

The two-day meeting was an opportunity to discuss the establishment of a management scheme for the Parc Naturel Marin des Estuaires Picards et de la Mer d'Opale and to discover existing awareness tools.

A broad panel of French and English speakers provided their insights. Some fifty participants from the Region and from Picardy attended, including managers, scientists, divers, nature lovers, etc.

Nausicaa Director, Philippe Vallette, welcomed the participants. Dominique Godefroy, President of the Parc Naturel Marin des Estuaires Picards et de la Mer d'Opale also set the friendly mood that prevailed during the event and Catherine Canova Ramet, Director of the PNM, described the context of the Park's creation and presented the consultation and functioning needed to implement the management scheme.

Several highlights paced the two-day event: plenary meetings, round tables, participatory coffee breaks, workshops and field trips.

At the plenary meetings, managers and scientists presented their work on the various practices.

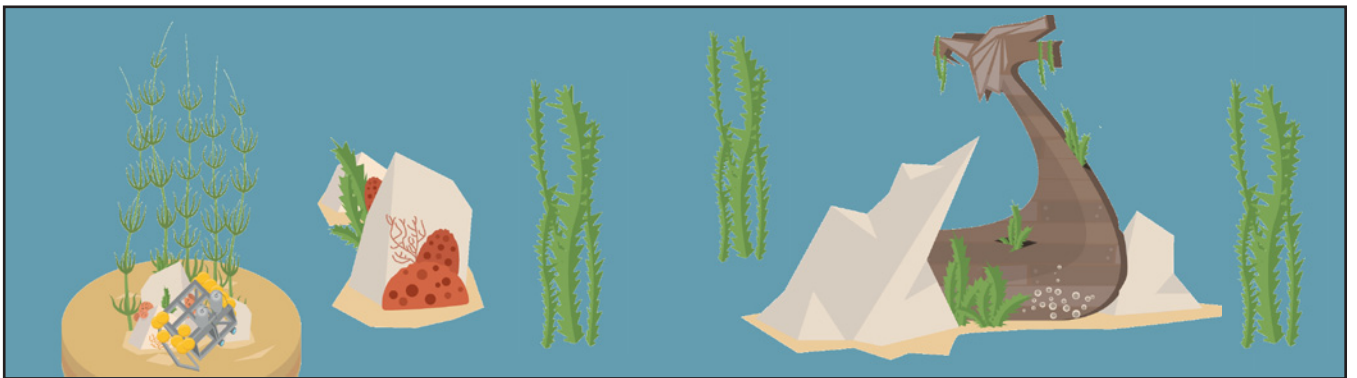
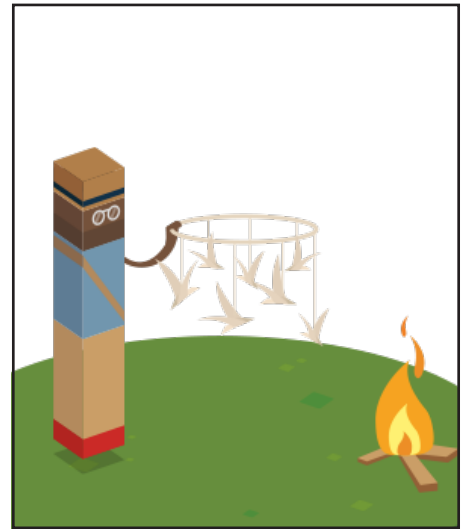
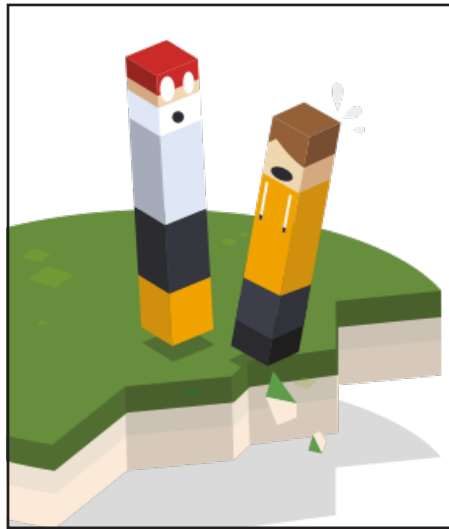
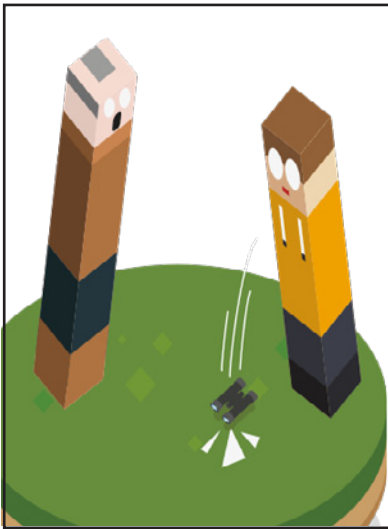
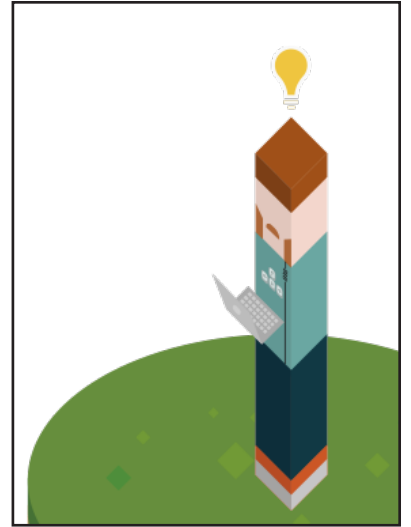
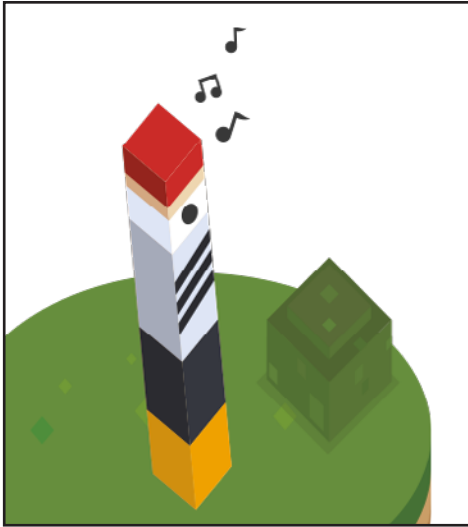
During the workshops, local players were able to discuss educational tools and existing citizen science programmes.



Over the two days, the emphasis was placed on consultation on how managers and site organisers communicate to stakeholders or the general public.

The role of Marine Protected Areas emerged as a key concept from the various workshops and meetings, together with the participants' ambition to create a sense of belonging.

The keywords to remember from this Meeting are: dialogue, respect for practices, need for awareness through educational tools, targeted communication and citizen science programmes.



PANACHE Expedition - the projects free educational video game is coming up soon!



PANACHE

Protected Area Network Across
the Channel Ecosystem

PANACHE is a Franco-British project funded by European programme INTERREG IV. The project aims for better protection of the Channel marine environment by establishing a network among existing marine protected areas.

There are five main project goals:

- Assess ecological coherence across the marine protected area network;
- Pool and share experience in monitoring these areas;
- Strengthen coherence and foster interaction for improved marine protected area management;
- Heighten awareness of marine protected areas: create a sense of ownership and shared expectations through citizen science programmes;
- Establish a public GIS database.

France and Great Britain are facing similar challenges to protect the marine biodiversity in their shared marine territory: PANACHE aims at providing a common, coherent and efficient reaction.

PANACHE est un projet franco-britannique, visant à une meilleure protection de l'environnement marin de la Manche par la mise en réseau des aires marines protégées existantes.

Les cinq objectifs du projet :

- Étudier la cohérence écologique du réseau des aires marines protégées;
- Mutualiser les acquis en matière de suivi de ces espaces, partager les expériences positives;
- Consolider la cohérence et encourager la concertation pour une meilleure gestion des aires marines protégées;
- Accroître la sensibilisation générale aux aires marines protégées : instaurer un sentiment d'appartenance et des attentes communes en développant des programmes de sciences participatives;
- Instaurer une base de données SIG publique.

France et Royaume-Uni sont confrontés à des défis analogues pour protéger la biodiversité marine de l'espace marin qu'ils partagent : PANACHE vise à apporter une réponse commune, cohérente et efficace.

- www.panache.eu.com -

Financé par



PANACHE Project partners / Partenaires du projet PANACHE

